

QUICK START GUIDE

VIO 4K - Ref. V701



ANALOG WAY
Pioneer in Analog, Leader in Digital

Thank you for choosing **Analog Way** and the **VIO 4K**. By following these simple steps, you will be able to set up and use within minutes your brand new **Video Processing Tool Box**. Discover the **VIO 4K** capabilities and intuitive interface designed to meet all needs in terms of image processing and conversion.

WHAT'S IN THE BOX

- 1 x **VIO 4K (V701)**
- 1 x Power supply cord
- 1 x Ethernet cross cable (for device control)
- 1 x MCO 5 pin connector
- 1 x Web-based Remote Control Software included and hosted on the device
- 1 x Rack mount kit (the parts are stowed in the packaging foam)
- 1 x User manual*
- 1 x Quick start guide*

* The User Manual and the Quick Start Guide are also available on www.analogway.com



Go to our website to register your product(s) and be notified about new firmware updates:
<http://bit.ly/AW-Register>

CAUTION!

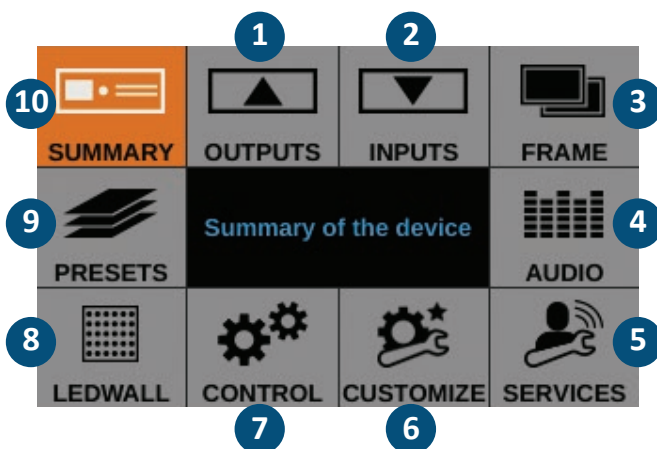
Additional support such as the rear rack or slide rails is strongly recommended for all mounting applications.

QUICK SETUP & OPERATION

You can quickly control and configure your new **VIO 4K** unit from the **VIO 4K** unit itself, via the front panel buttons and the front panel menu tree.

- Switch ON the unit to access the front panel menu tree:

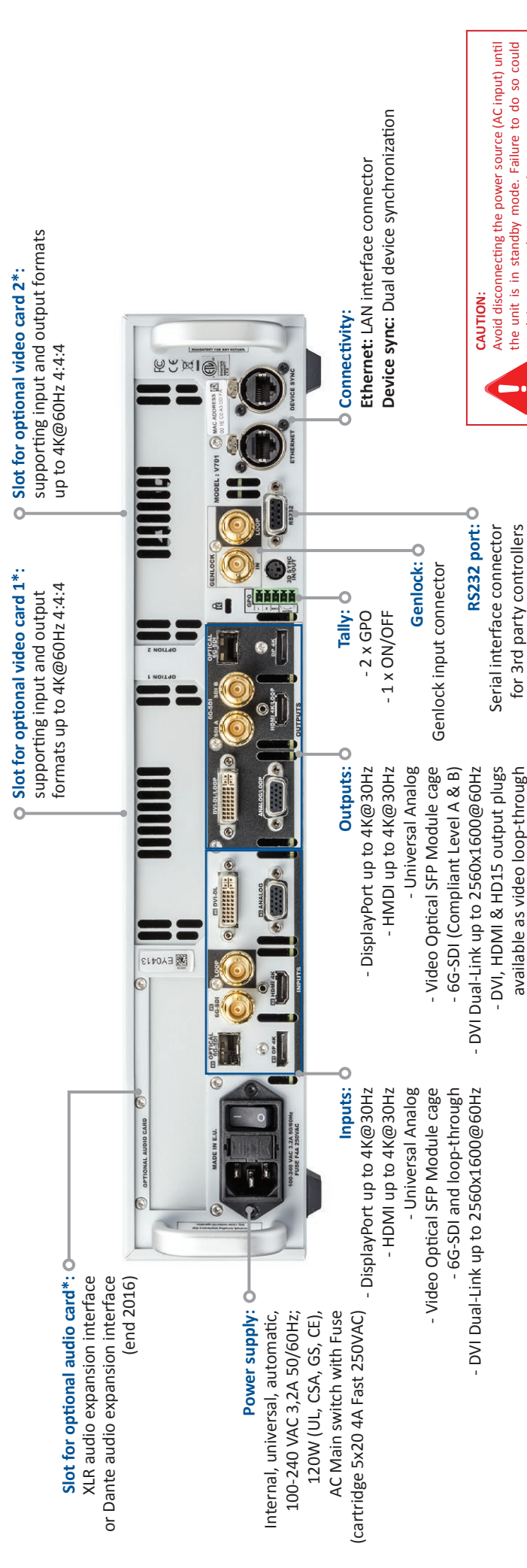
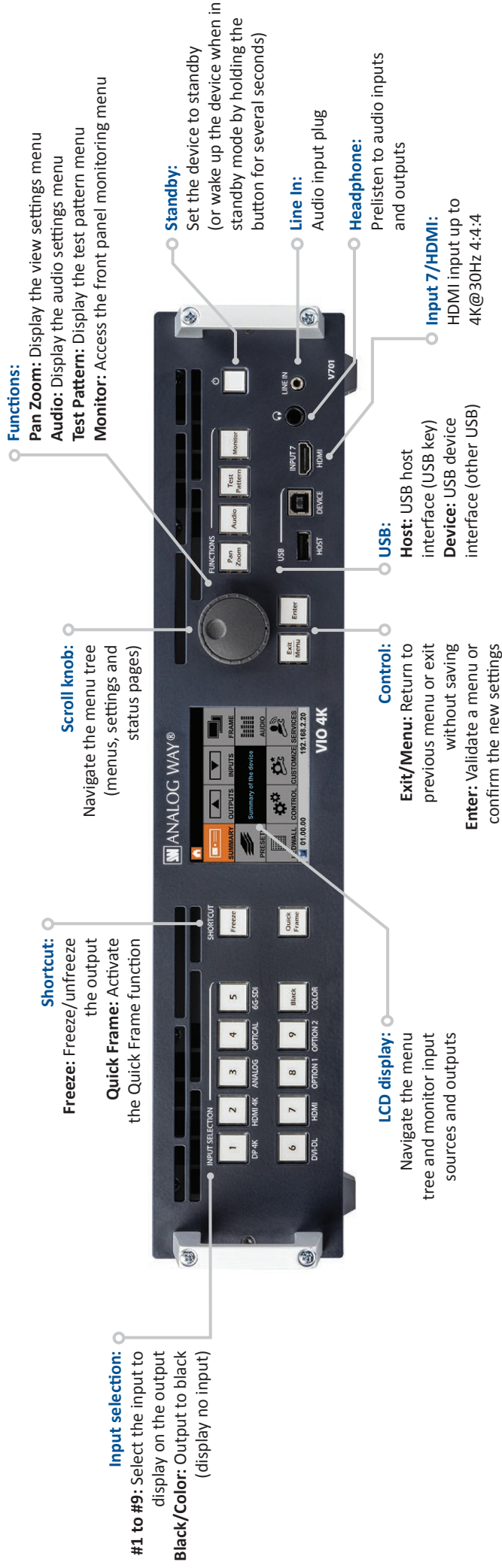
Front panel menus on LCD display



1. Set up your outputs and outputs plugs
2. Set up your inputs and inputs plugs
3. Import frames and manage frame features
4. Set up the audio and manage A/V mapping
5. Access technical support information and device control services
6. Create custom formats, manage transitions, adjust the screen background color ...
7. Manage the device settings and control functions like LAN and the Safe Input Select feature
8. Adjust the LED wall area of interest (AOI) and set up the view
9. Save and load preset configurations
10. Check your current **VIO 4K** configuration

- Rotate the front panel **control knob** and press the **ENTER** and **EXIT/MENU** buttons to navigate through the menus and adjust your setup.
- Select the input to display on the output by choosing the corresponding **INPUT SELECTION** button, or use **BLACK** to output to the screen background color.

VIO 4K - REF. V701 / FRONT & REAR PANELS DESCRIPTION






CAUTION: Avoid disconnecting the power source (AC input) until the unit is in standby mode. Failure to do so could result in memory data corruption.

* See the VIO 4K User Manual for more details

OPERATION OVERVIEW

BUTTON COLOR USAGE

- Solid red:**  Active input, function or shortcut
- Solid green:**  Available input, function or shortcut
- Blinking:**  Device initializing
- OFF:**  Not available input, function or shortcut

OUTPUT SETUP

Enter the **OUTPUTS** menu to set up your output(s).

Output format and rate:

- Choose the format and rate generation mode and then adjust the format settings accordingly.
- Go to the **CUSTOMIZE** menu and create your own **custom format** when the required format is not available in the list of predefined output formats.

TIP: Try to use native resolution of your screens/projectors to avoid additional scaling.

Area of interest:

Adjust the active area of your display in the output format.

Image corrections:

- Adjust the gamma correction of your output image (especially useful if setting up a **LED Wall**).
- Use the advanced color adjustments like color temperature, brightness and contrast to truly fine-tune your output image.

INPUT SETUP

- Enter the **INPUTS** menu to have an overview of all your inputs and their status.
- Select **AUTOSET ALL** to launch the automatic detection of all plugs of all inputs.

Input settings:

- Select an input to set up the input individually.
- Enter the **Plug Settings** menu to select the type of input signal by plug, enable or disable HDCP negotiation on the sources connected to the input plug, and manage the plug's preferred EDID formats.
- Select the **Image Settings** menu to optimize the input image signal and correct for the image aspect ratio and size.

TIP: Crop the image and use a display aspect ratio to correct for the image aspect ratio after crop.

AUDIO MANAGEMENT

Audio in & out settings:

- Set up the audio independently of the video content:
- Manage up to 4 embedded channel pairs per input/output.
 - Configure the auxiliary audio for each audio pair.
 - Set up an audio prelist and prelisten to your content on the headphone output.

A/V mapping:

Select an A/V mapping mode to map an audio stream to the output (embedded audio by A/V mapping):

- **Follow mapping mode:** The audio content of the output will follow the A/V mapping of the input selected at runtime.
- **Direct routing mode:** The audio content of the output is set once and for all, independently of the input selected at runtime.

TIP: Use **Follow mapping mode** to map audio streams and input plugs and set up the A/V mapping of your inputs.

VIEW SETTINGS

Set up the "View" of your inputs in the screen:

- Use **Pan** and **Zoom** to size and position the view in your screen.
- Apply a color **Effect** or enable a **Flip** movement on the view of a live input.
- **Save** your view settings and recall them later on any input via the **View Bank**.
- Create **presets** of your input and view settings to load them readily at runtime.

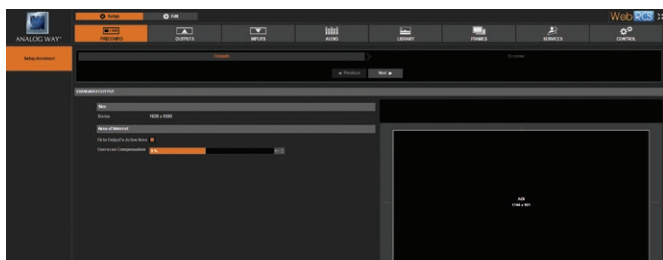
SOURCE CONTROL

- **Freeze** the output and **Monitor** inputs and outputs on the front panel LCD display.
- Customize the **Transition Type** and the **Transition Duration** to smoothly transition between sources.
- Use **Frames** to transition through frame or activate the **Quick Frame** function to quickly display a frame on the output.
- Select the input to display on the output by choosing the corresponding **INPUT SELECTION** button.

TIP: Enable the **Safe Input Select** front panel control to lock the selection of inputs without signal.

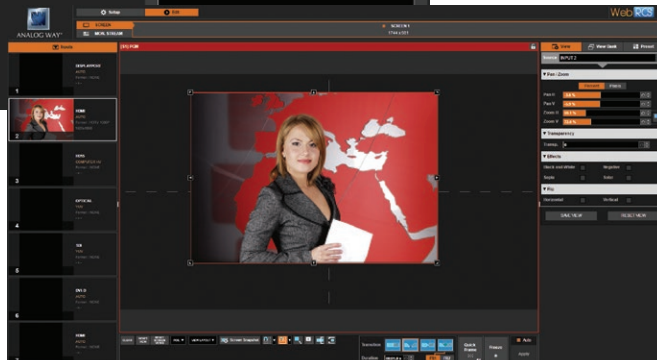
You can use the **Web RCS** interface to remotely control and configure your **VIO 4K** unit from a PC or tablet via LAN or via USB.

Web RCS interface loaded into your web browser



SETUP MENU

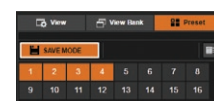
- Set up your outputs and create custom formats
- Set up your inputs and input plugs
- Set up the audio and manage A/V mapping
- Import frames and manage frame features
- Access technical support information
- Manage the device settings and control functions



EDIT MENU

Put everything together in the screen:

- Resize and position the view
- Save and recall view settings
- Save and recall presets
- Monitor input sources
- Select inputs
- Manage transitions
- Freeze the output
- Display a Quick Frame
- ...



The **Web RCS** remote control software comes embedded into your **VIO 4K** unit and you simply need a web browser and a standard LAN network (or an Ethernet over USB connection) to connect.

Connecting to the Web RCS (LAN)*

To connect to the Web RCS of your **VIO 4K** using a standard LAN network:

1. Connect your computer to the **VIO 4K** using the provided Ethernet cable
2. On your computer, open a web browser that supports Flash® player
3. In this web browser, enter the IP address of your **VIO 4K** (displayed in the front panel LCD screen).

The Web RCS connection should start.

Manual setup: If your computer is not set to DHCP (automatic IP detection) mode, you need to setup LAN manually to be able to connect:

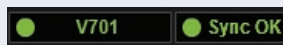
- (1) Set up your VIO 4K
 1. Go to **Control > Connection > LAN Setup** on the front panel menu tree
 2. Disable the **Obtain IP via DHCP** functionality
 3. Edit the LAN settings of your **VIO 4K** unit, for example:
 - **IP address:** 192.168.2.140
 - **Gateway:** 192.168.2.160 • **Netmask:** 255.255.255.0
 4. Select **Apply** to save and apply the new settings.

(2) Set up the LAN adaptor of your PC

1. Open your LAN adaptor settings
2. Assign an IP address to your computer on the same network and subnet as your **VIO 4K**, for example:
 - **IP address:** 192.168.2.16 • **Gateway:** 192.168.2.150
 - **Netmask:** 255.255.255.0

You should be able to connect now.

Once the connection has been established, the Web RCS interface will load into your web browser. The 2 icons at the bottom right corner of the screen indicate that the Web RCS is ready to be used:



- **V701:** Turns green when connected
- **Sync OK:** Turns green when the Web RCS has finished synchronizing

If you are having trouble synchronizing, try clearing the cache and refreshing the page (CTRL+F5 shortcut on most browsers).

* Please see the User Manual for information on how to connect via USB.

WARRANTY AND SERVICE

This **Analog Way** product has a 3 year warranty on parts and labor, back to factory. This warranty does not include faults resulting from user negligence, special modifications, electrical surges, abuse (drop/crush), and/or other unusual damage. In the unlikely event of a malfunction, please contact your local **Analog Way** office for service.

GOING FURTHER WITH THE VIO 4K

For more details on features, functions and procedures, please refer to the **VIO 4K** User Manual or visit our website: www.analogway.com